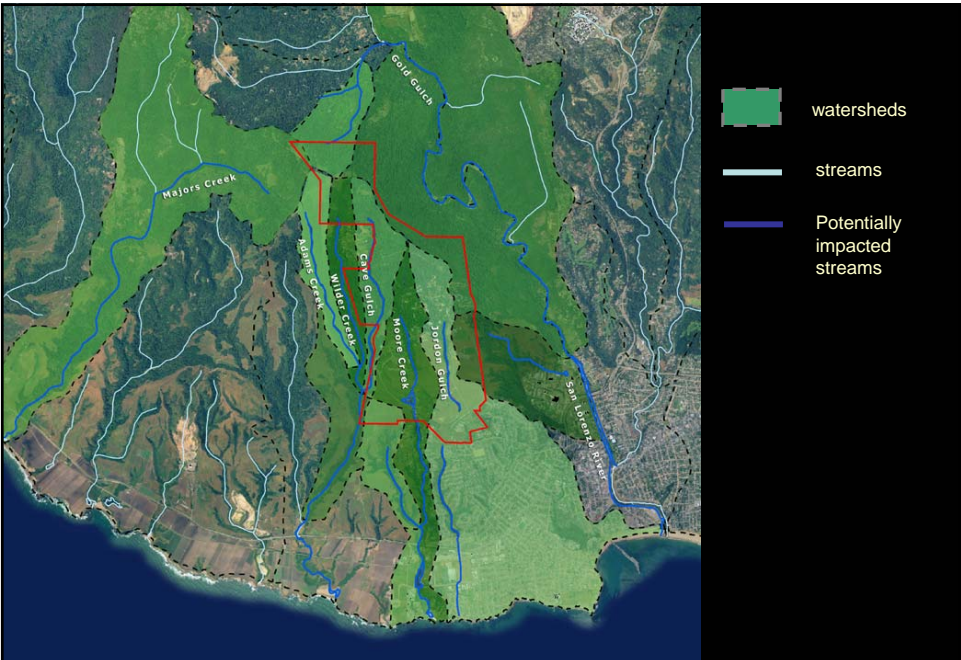


# Open Space Considerations



UNIVERSITY OF CALIFORNIA  
SANTA CRUZ

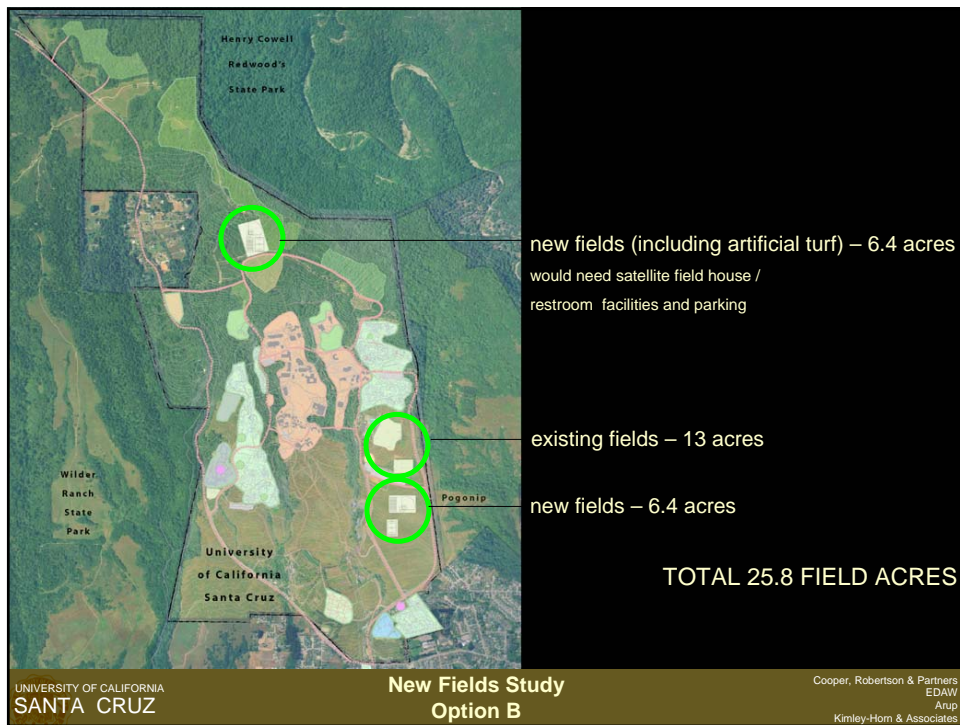
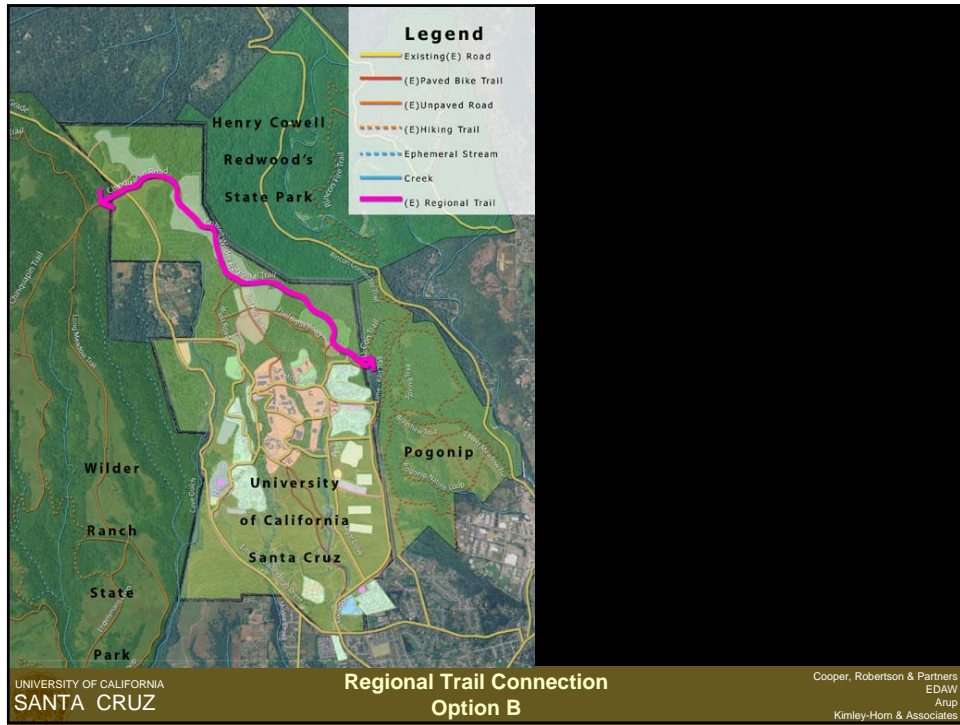
Cooper, Robertson & Partners  
EDAW  
Arup  
Kimley-Horn & Associates

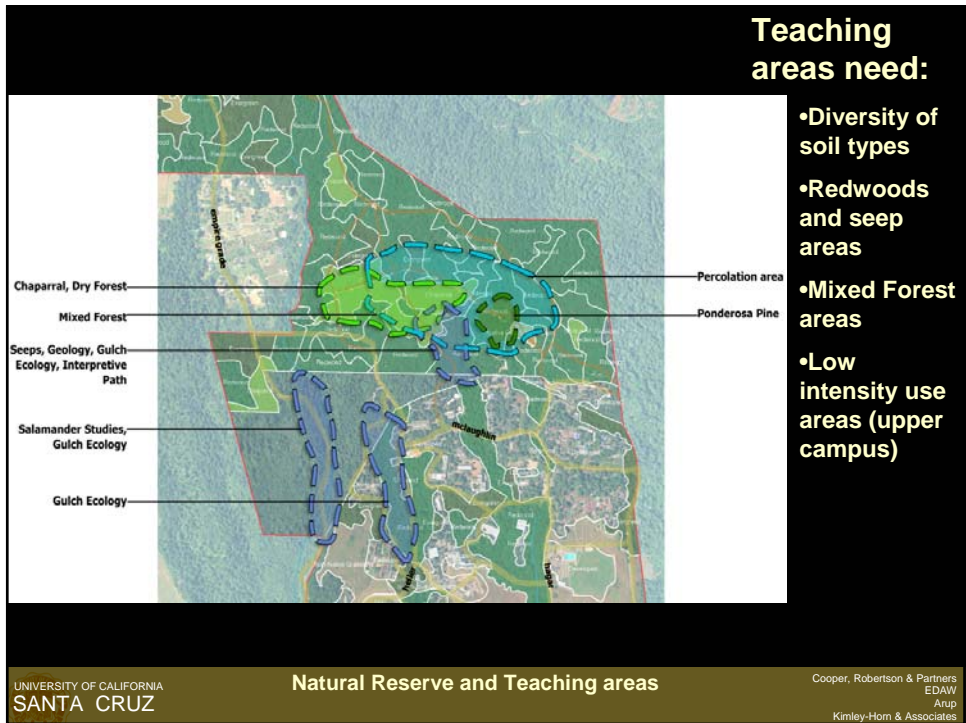
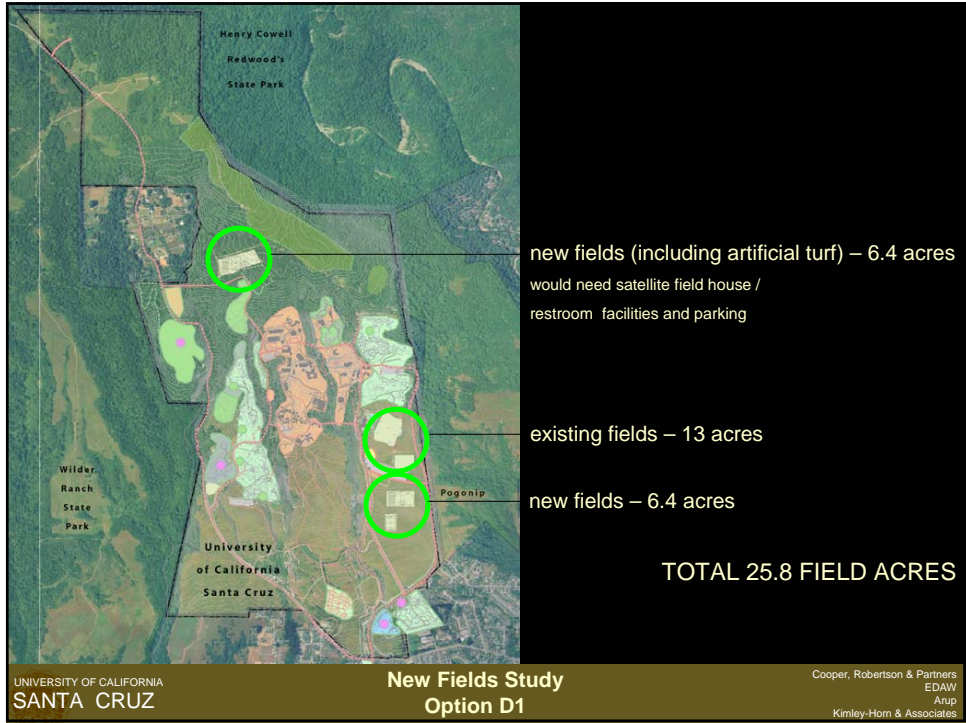


UNIVERSITY OF CALIFORNIA  
SANTA CRUZ

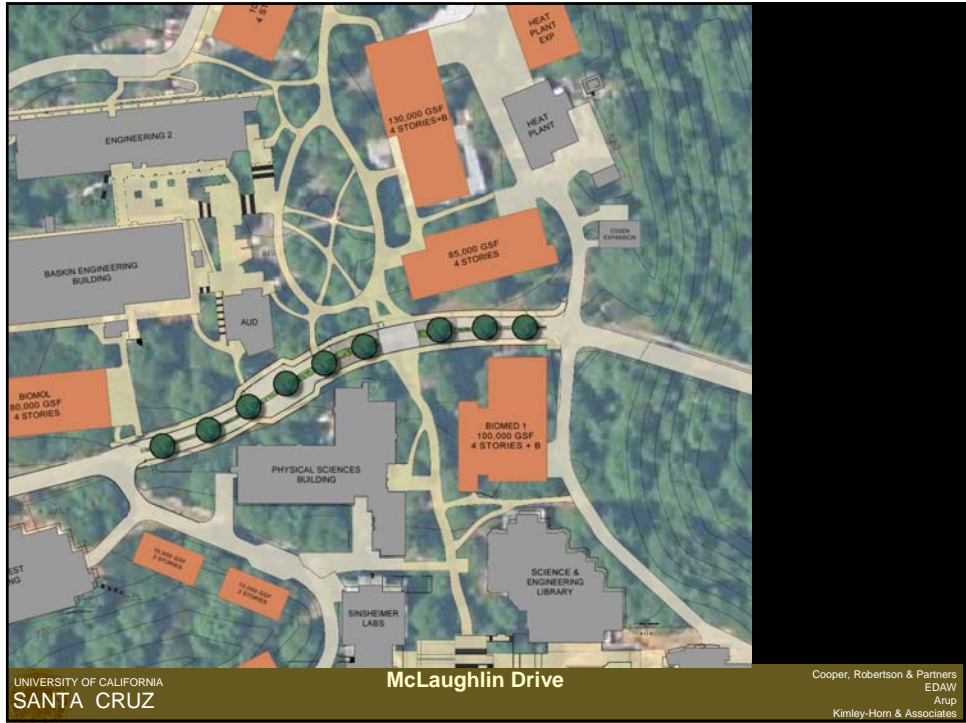
Watershed Map

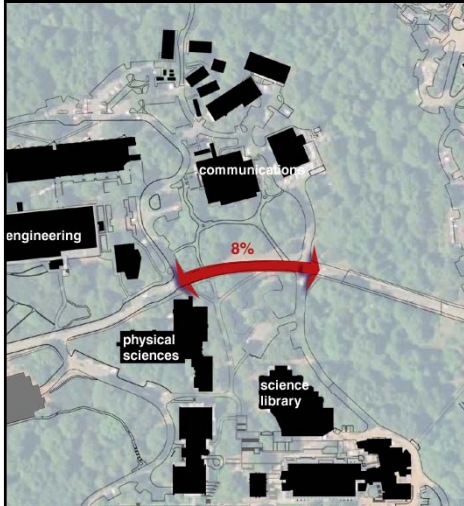
Cooper, Robertson & Partners  
EDAW  
Arup  
Kimley-Horn & Associates











**8% for 380'**

UNIVERSITY OF CALIFORNIA  
SANTA CRUZ

**Existing Slopes**  
McLaughlin at science hill

Cooper, Robertson & Partners  
EDAW  
Arup  
Kimley-Horn & Associates



**10% for 200'**



UNIVERSITY OF CALIFORNIA  
SANTA CRUZ

**Existing Slopes**  
Quarry plaza to McLaughlin

Cooper, Robertson & Partners  
EDAW  
Arup  
Kimley-Horn & Associates

**Equivalent of  
18% for 150'**

UNIVERSITY OF CALIFORNIA  
SANTA CRUZ

**Existing Slopes**  
Music to arts

Cooper, Robertson & Partners  
EDAW  
Arup  
Kimley-Horn & Associates

**18% for 900'**

UNIVERSITY OF CALIFORNIA  
SANTA CRUZ

**Existing Slopes**  
Red Hill Road

Cooper, Robertson & Partners  
EDAW  
Arup  
Kimley-Horn & Associates



- articulated building edges
- building around existing trees
- overhead tree canopy
- intimate, enclosed spaces
- screened buildings, native plantings

UNIVERSITY OF CALIFORNIA  
SANTA CRUZ

**Existing Density and Character**  
- Science Hill

Cooper, Robertson & Partners  
EDAW  
Arup  
Kimley-Horn & Associates

- closely spaced buildings create internally focused social spaces
- low and narrow buildings allow glimpses of forest beyond
- view corridors to forest

UNIVERSITY OF CALIFORNIA  
SANTA CRUZ

**Existing Density and Character**  
- Kresge College

Cooper, Robertson & Partners  
EDAW  
Arup  
Kimley-Horn & Associates

• Buildings spaced to create internal social space  
 • larger forest areas retained  
 • View corridors to forest

UNIVERSITY OF CALIFORNIA  
 SANTA CRUZ

**Density and Character**  
 College 9 and 10

Cooper, Robertson & Partners  
 EDAA  
 Arup  
 Kimley-Horn & Associates

• Redwoods dwarf even 5-6 story buildings  
 • Vertical building details work well in redwood environment

UNIVERSITY OF CALIFORNIA  
 SANTA CRUZ

**Building Height and Massing**  
 College 9-10

Cooper, Robertson & Partners  
 EDAA  
 Arup  
 Kimley-Horn & Associates



- 5-6 stories at south end of slope
- 3-4 stories at north end of slope

UNIVERSITY OF CALIFORNIA  
SANTA CRUZ

**Building Height and Massing  
Physical Sciences**

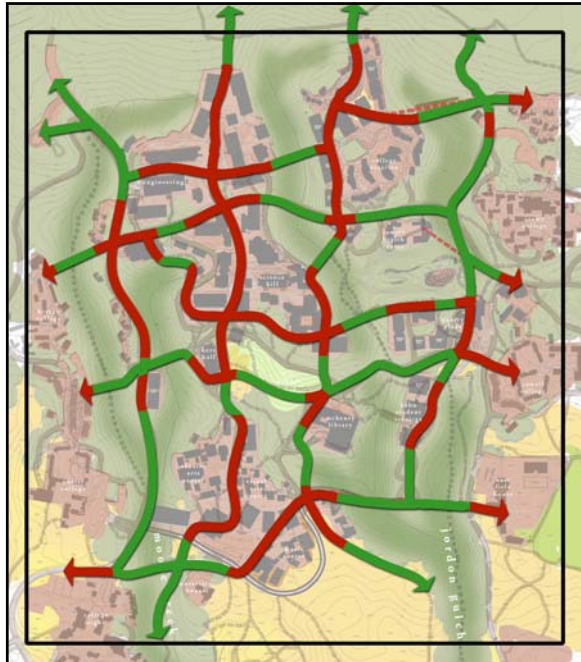
Cooper, Robertson & Partners  
EDAW  
Arup  
Kimley-Horn & Associates

- "Warped grid" of north south and east west routes acts as basic circulation framework
- Pedestrian routes alternate natural and developed environments

UNIVERSITY OF CALIFORNIA  
SANTA CRUZ

**Pedestrian Rhythms - existing**

Cooper, Robertson & Partners  
EDAW  
Arup  
Kimley-Horn & Associates



- 3-4 story infill buildings
- New segments connect a more complete "Warped Grid"
- Retained landscapes (Gulches, Kerr meadow, Great Meadow, North Campus slopes) maintain the natural / developed rhythm

UNIVERSITY OF CALIFORNIA  
SANTA CRUZ

### Pedestrian Rhythms – Option D1

Cooper, Robertson & Partners  
EDAW  
Arup  
Kimley-Horn & Associates